
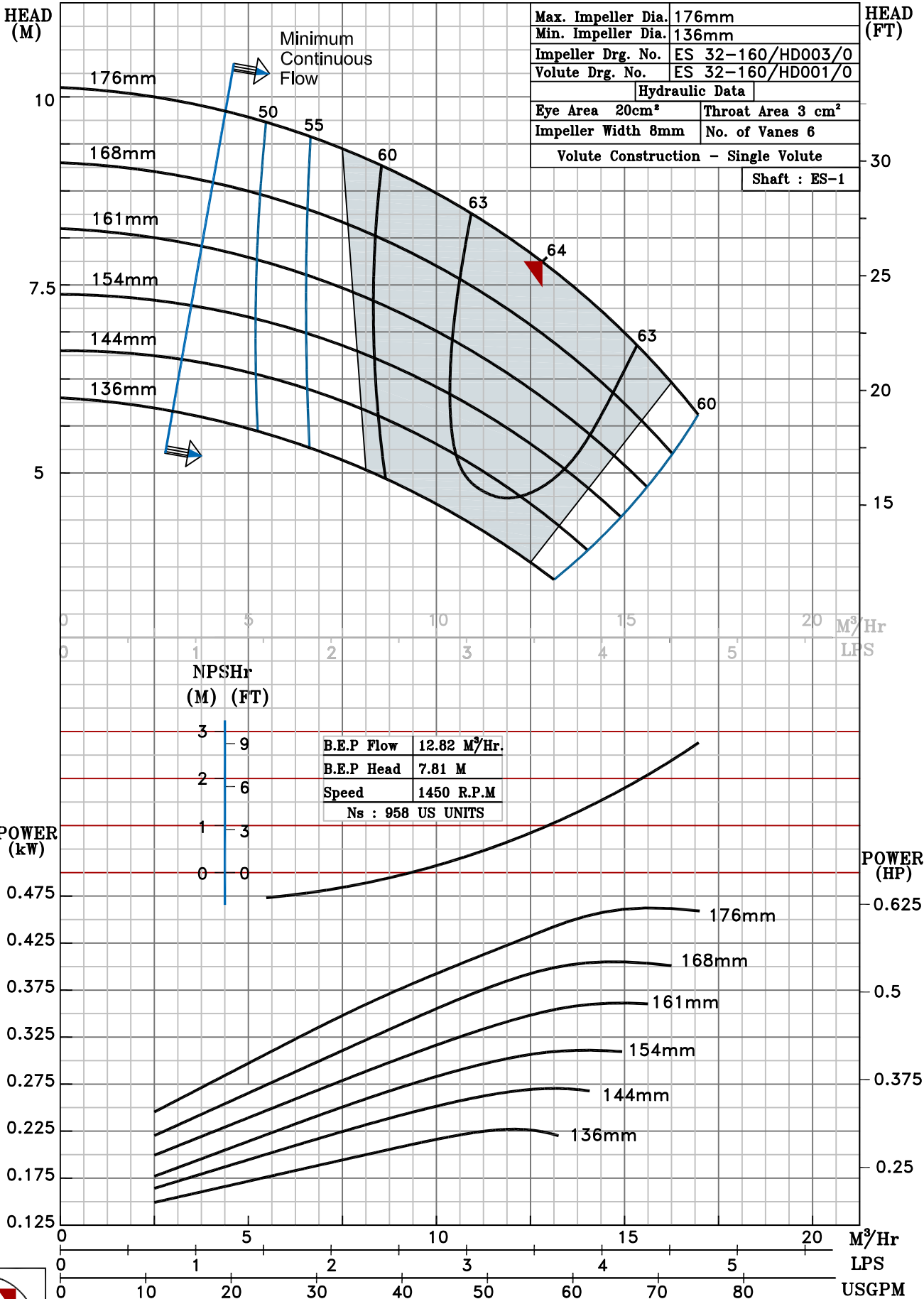


NOTE- PERFORMANCE AS PER ISO 9906 GRADE-2B

PERFORMANCE CURVE OF ES 32-160 @1450 R.P.M		ES 32-160/X/400254
 PUMPSense ISO 2858 ES RANGE	MODEL ES 32-160	WORKING PRESS. 16 bar
	SIZE 50x32-176	TEST PRESS. 24 bar
	TYPE - END SUCTION BACK PULL OUT	

SHADED REGION ON THE H-Q CURVE REPRESENTS OPTIMUM SELECTION ZONE

PUMP PERFORMANCE CHARACTERISTICS COMPUTED BASED ON CLEAN COLD WATER S.G 1.0



1450 RPM