
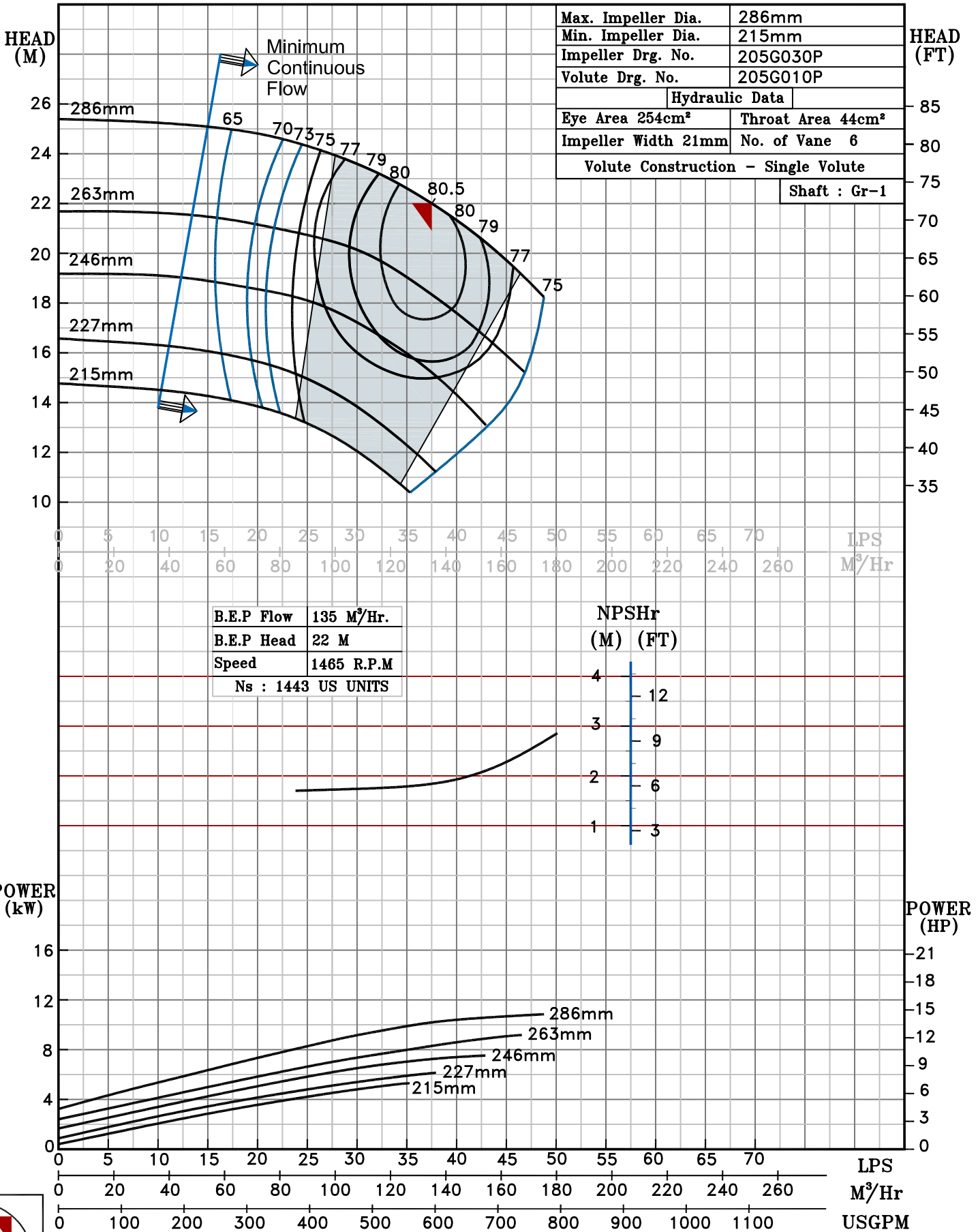


NOTE- PERFORMANCE AS PER ISO 9906 GRADE-2B

PERFORMANCE CURVE OF 80LA @1465 R.P.M		80LA/X/200554	
 <h1>PUMPSENSE</h1> <p><i>CSC RANGE</i></p>	<b>MODEL</b> 80LA	WORKING PRESS.	12 bar
	SIZE 100x80-286	TEST PRESS.	18 bar
	TYPE-AXIALLY SPLIT CASE SINGLE STAGE		
			SPEED 1465 rpm
SHADED REGION ON THE H-Q CURVE REPRESENTS OPTIMUM SELECTION ZONE			DATE - 10.08.14

PUMP PERFORMANCE CHARACTERISTICS COMPUTED BASED ON CLEAN COLD WATER S.G 1.0

Max. Impeller Dia.	286mm
Min. Impeller Dia.	215mm
Impeller Drg. No.	205G030P
Volute Drg. No.	205G010P
Hydraulic Data	
Eye Area 254cm <sup>2</sup>	Throat Area 44cm <sup>2</sup>
Impeller Width 21mm	No. of Vane 6
Volute Construction - Single Volute	
Shaft : Gr-1	



1465 RPM