
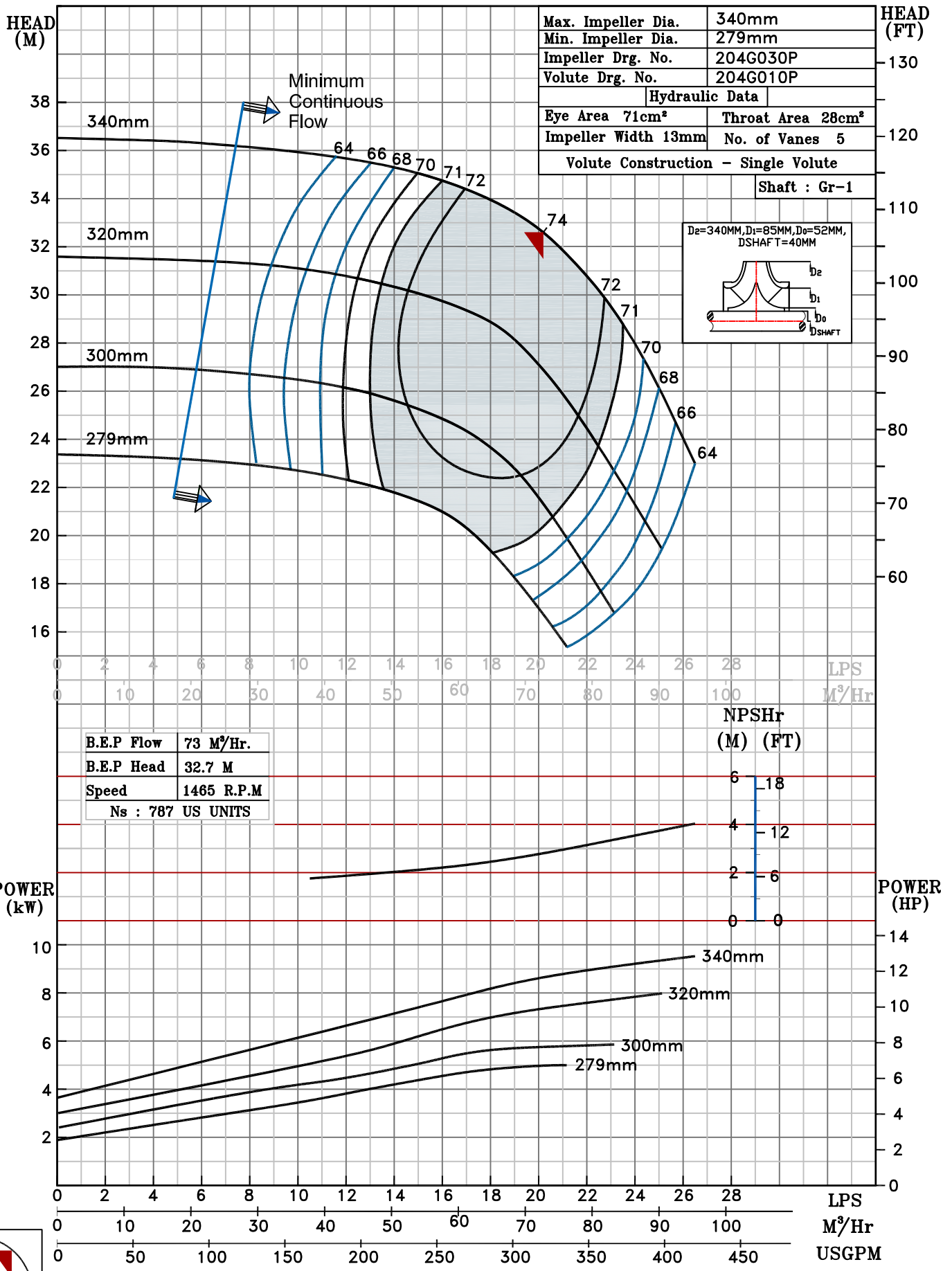


NOTE- PERFORMANCE AS PER ISO 9906 GRADE-2B

PERFORMANCE CURVE OF 65MA @1465 R.P.M		65MA/X/200454		
 PUMPSENSE <i>CSC RANGE</i>	MODEL 65MA	WORKING PRESS.	12 bar	
	SIZE 80x65-340	TEST PRESS.	18 bar	
	TYPE-AXIALLY SPLIT CASE SINGLE STAGE		SPEED 1465 rpm	
			DATE - 10.08.14	

SHADED REGION ON THE H-Q CURVE REPRESENTS OPTIMUM SELECTION ZONE

PUMP PERFORMANCE CHARACTERISTICS COMPUTED BASED ON CLEAN COLD WATER S.G 1.0



1465 RPM