

NOTE- PERFORMANCE AS PER ISO 9906 GRADE-2B

PERFORMANCE CURVE OF 65LA @1465 R.P.M

65LA/X/200354



PUMPSENSE

CSC RANGE

MODEL 65LA

WORKING PRESS. 12 bar

SIZE 80x65-278

TEST PRESS. 18 bar

TYPE-AXIALLY SPLIT CASE SINGLE STAGE

SPEED 1465 rpm

SHADED REGION ON THE H-Q CURVE REPRESENTS OPTIMUM SELECTION ZONE

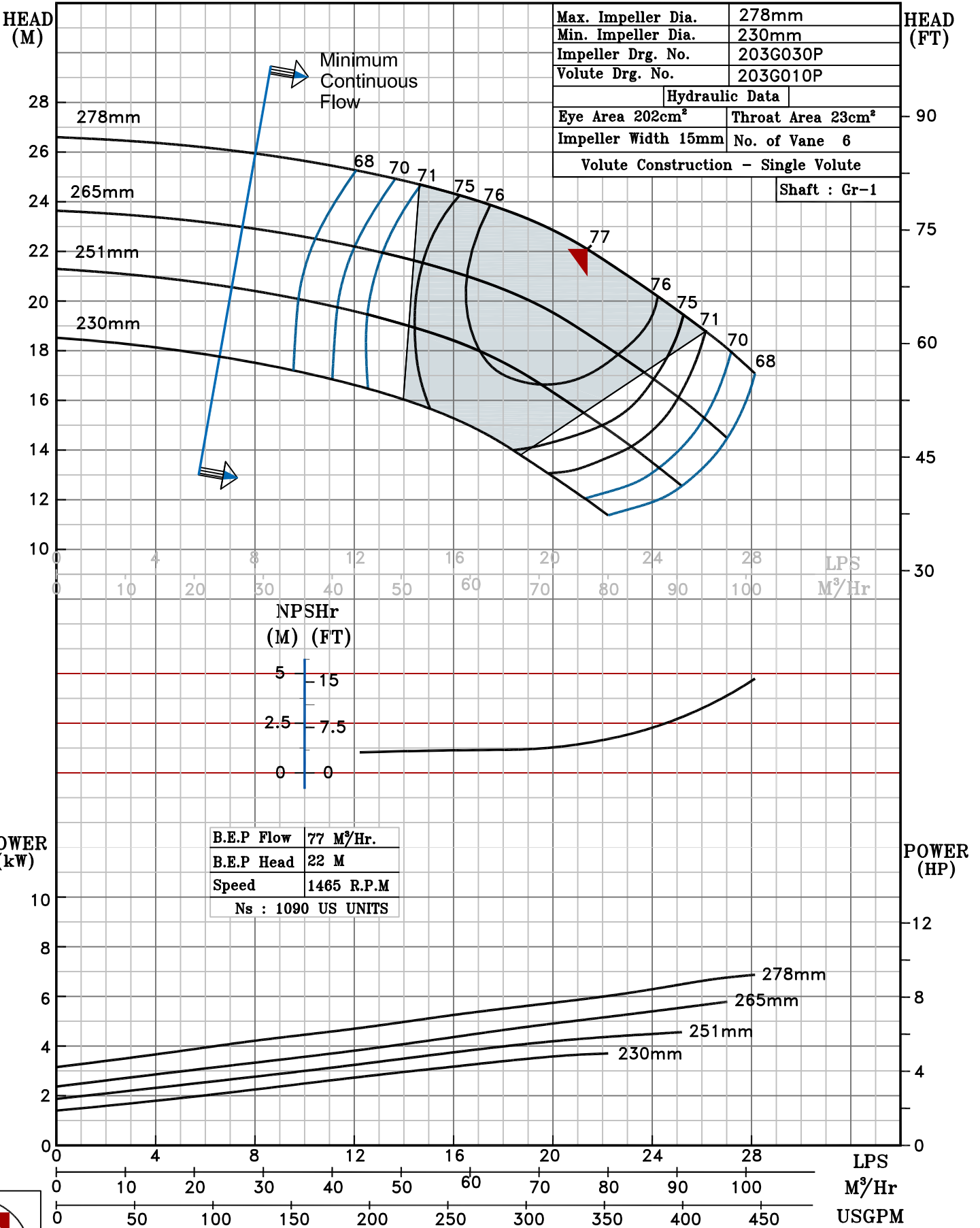
DATE - 10.08.14

PUMP PERFORMANCE CHARACTERISTICS COMPUTED BASED ON CLEAN COLD WATER S.G 1.0

Max. Impeller Dia.	278mm
Min. Impeller Dia.	230mm
Impeller Drg. No.	203G030P
Volute Drg. No.	203G010P

Hydraulic Data	
Eye Area 202cm ²	Throat Area 23cm ²
Impeller Width 15mm	No. of Vane 6
Volute Construction - Single Volute	

Shaft : Gr-1



B.E.P Flow	77 M ³ /Hr.
B.E.P Head	22 M
Speed	1465 R.P.M
Ns : 1090 US UNITS	



1465 RPM