


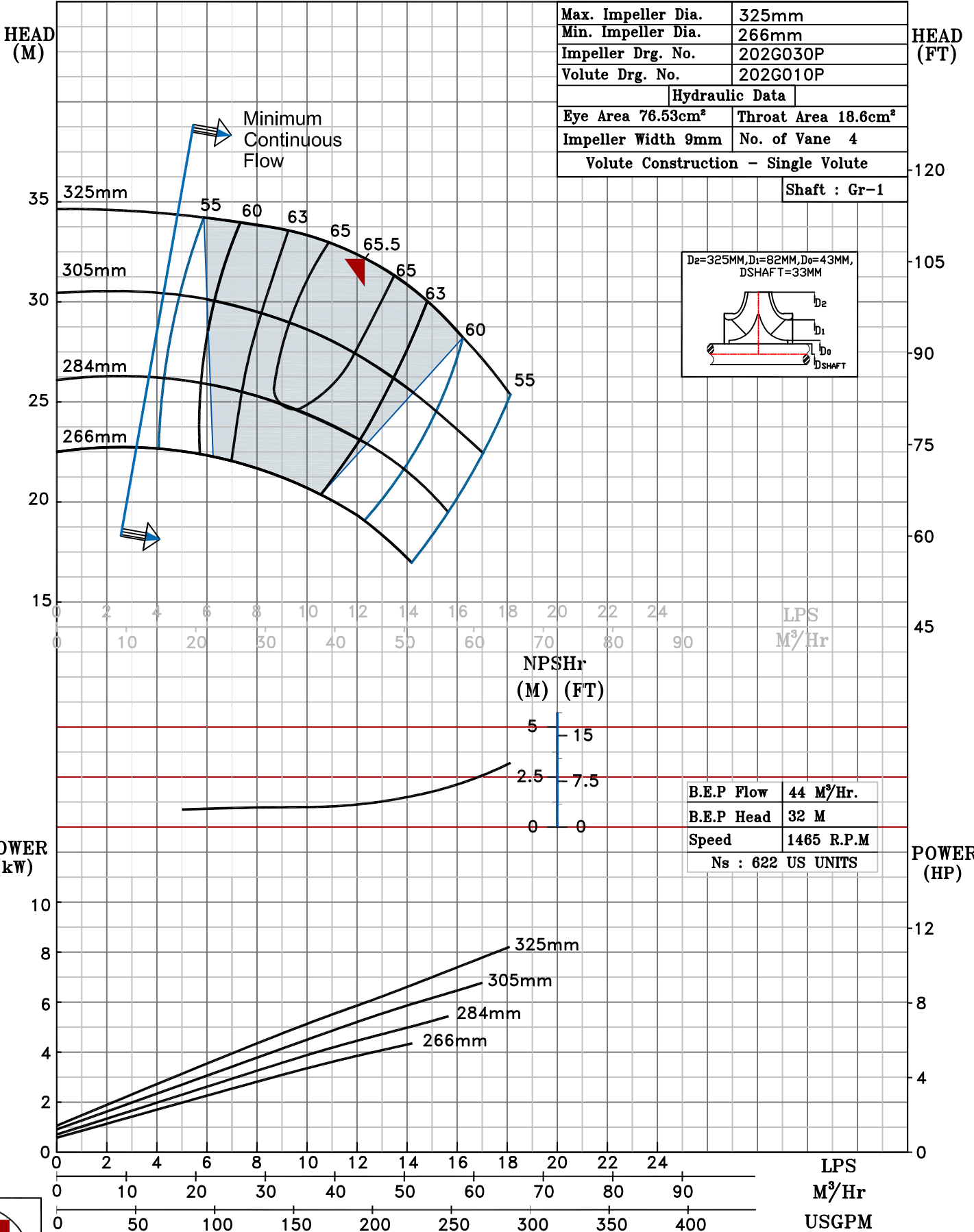
NOTE- PERFORMANCE AS PER ISO 9906 GRADE-2B

PERFORMANCE CURVE OF 50MA @1465 R.P.M		50MA/X/200254	
 <h1>PUMPSENSE</h1> <p><i>CSC RANGE</i></p>	MODEL 50MA	WORKING PRESS. 12 bar	
	SIZE 80x50-325	TEST PRESS. 18 bar	
	TYPE-AXIALLY SPLIT CASE SINGLE STAGE		SPEED 1465 rpm

SHADED REGION ON THE H-Q CURVE REPRESENTS OPTIMUM SELECTION ZONE

PUMP PERFORMANCE CHARACTERISTICS COMPUTED BASED ON CLEAN COLD WATER S.G 1.0

Max. Impeller Dia.	325mm
Min. Impeller Dia.	266mm
Impeller Drg. No.	202G030P
Volute Drg. No.	202G010P
Hydraulic Data	
Eye Area 76.53cm ²	Throat Area 18.6cm ²
Impeller Width 9mm	No. of Vane 4
Volute Construction - Single Volute	
Shaft : Gr-1	



B.E.P Flow	44 M ³ /Hr.
B.E.P Head	32 M
Speed	1465 R.P.M
Ns : 622 US UNITS	



1465 RPM