


NOTE- PERFORMANCE AS PER ISO 9906 GRADE-2B

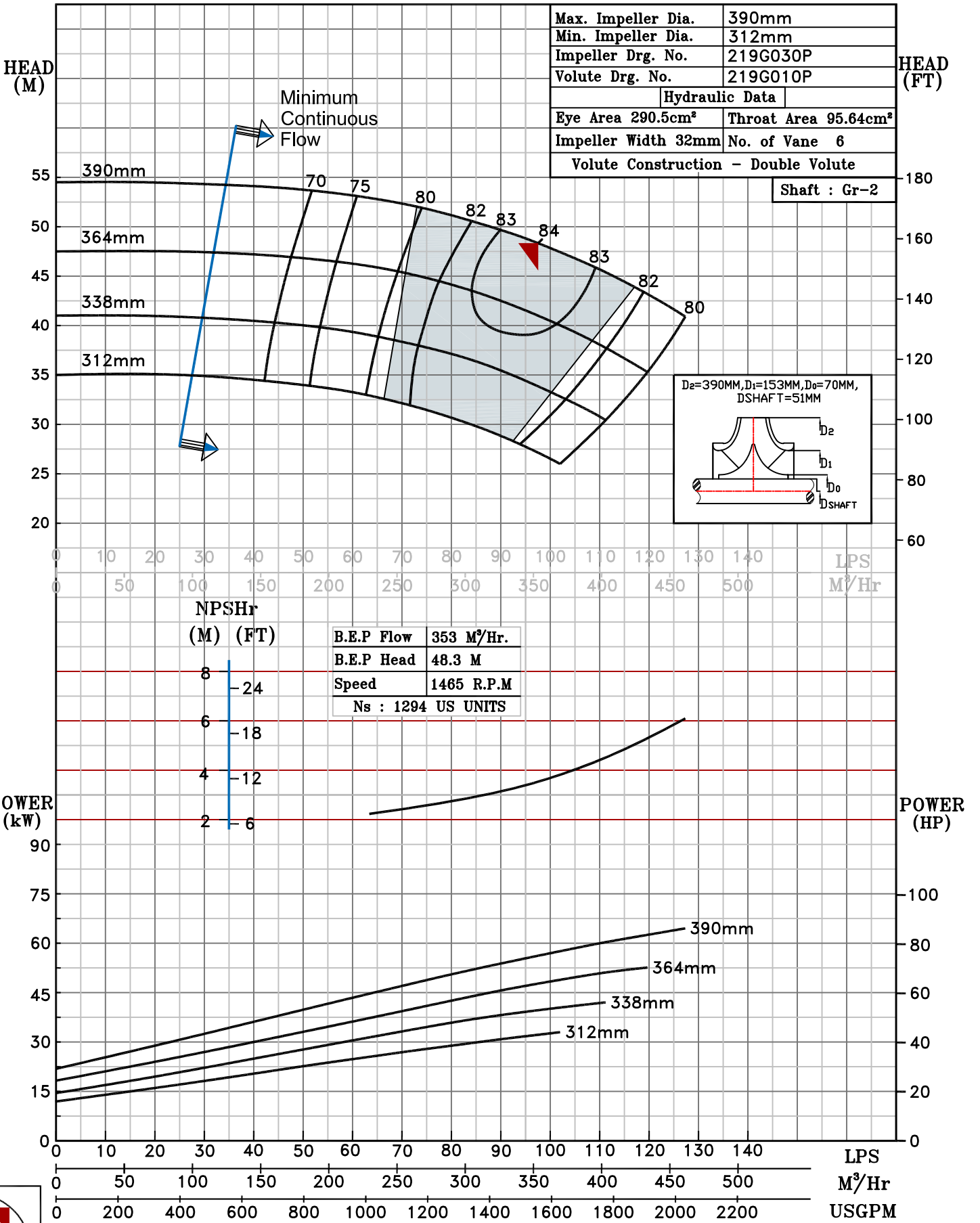
PERFORMANCE CURVE OF 150HA @1465 R.P.M		150HA/Y/201954	
 PUMPSENSE <i>CSC RANGE</i>	MODEL 150HA	WORKING PRESS.	12 bar
	SIZE 200x150-390	TEST PRESS.	18 bar
	TYPE-AXIALLY SPLIT CASE SINGLE STAGE		
			SPEED 1465 rpm
			DATE - 10.12.14

SHADED REGION ON THE H-Q CURVE REPRESENTS OPTIMUM SELECTION ZONE

PUMP PERFORMANCE CHARACTERISTICS COMPUTED BASED ON CLEAN COLD WATER S.G 1.0

Max. Impeller Dia.	390mm
Min. Impeller Dia.	312mm
Impeller Drg. No.	219G030P
Volute Drg. No.	219G010P
Hydraulic Data	
Eye Area 290.5cm²	Throat Area 95.64cm²
Impeller Width 32mm	No. of Vane 6
Volute Construction - Double Volute	

Shaft : Gr-2



1465 RPM