
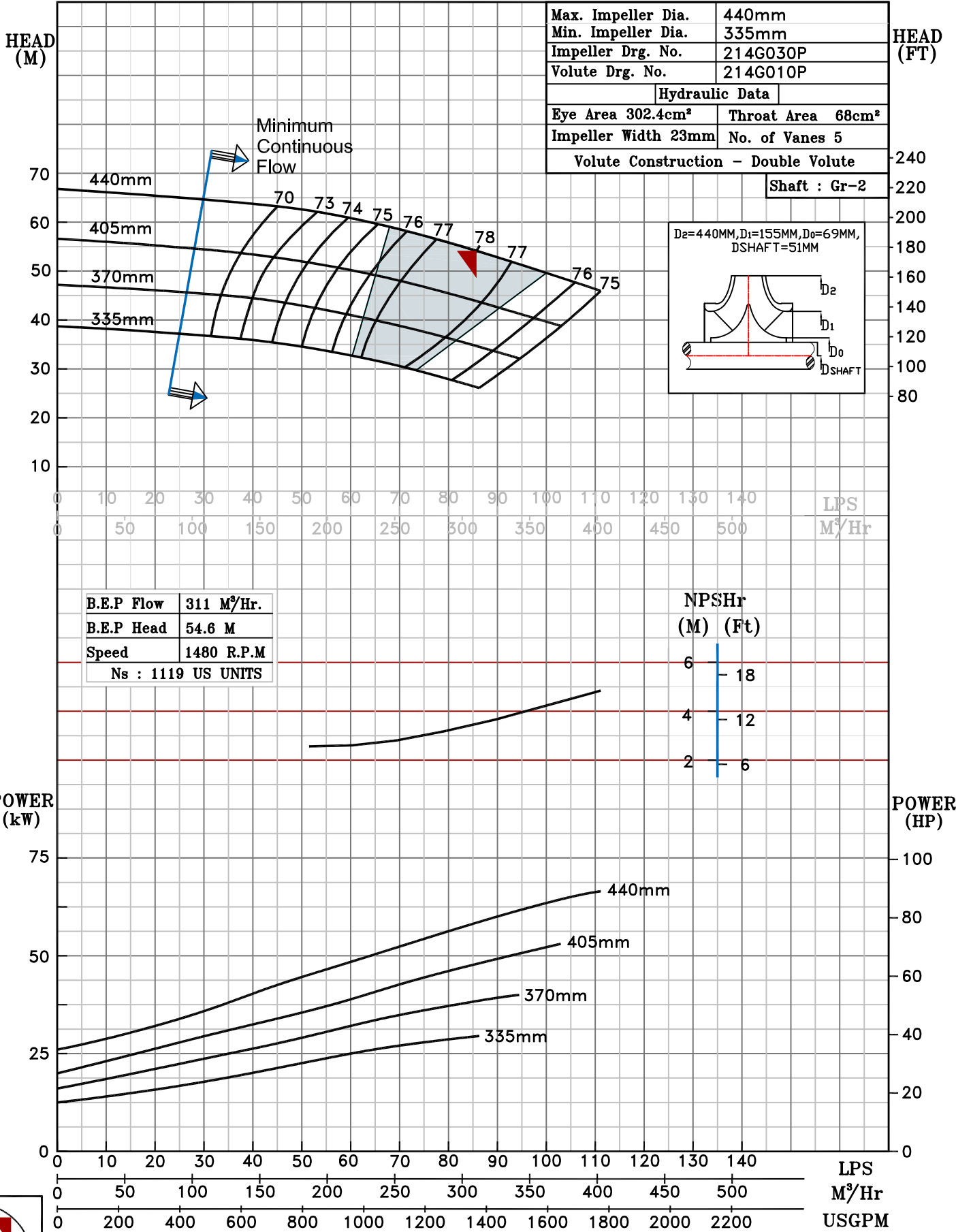


PERFORMANCE CURVE OF 125HH @1480 R.P.M		125HH/Y/201454	
 <b>PUMPSENSE</b> <i>CSC RANGE</i>	<b>MODEL 125HH</b>	WORKING PRESS. 16 bar	
	SIZE 150x125-440	TEST PRESS. 24 bar	
	TYPE-AXIALLY SPLIT CASE SINGLE STAGE		SPEED 1480 rpm
SHADED REGION ON THE H-Q CURVE REPRESENTS OPTIMUM SELECTION ZONE			DATE - 10.12.14

PUMP PERFORMANCE CHARACTERISTICS COMPUTED BASED ON CLEAN COLD WATER S.G 1.0



Max. Impeller Dia.	440mm
Min. Impeller Dia.	335mm
Impeller Drg. No.	214G030P
Volute Drg. No.	214G010P
Hydraulic Data	
Eye Area 302.4cm <sup>2</sup>	Throat Area 68cm <sup>2</sup>
Impeller Width 23mm	No. of Vanes 5
Volute Construction - Double Volute	
Shaft : Gr-2	

B.E.P Flow	311 M <sup>3</sup> /Hr.
B.E.P Head	54.6 M
Speed	1480 R.P.M
Ns : 1119 US UNITS	

NPSHr	
(M)	(Ft)
6	18
4	12
2	6

