
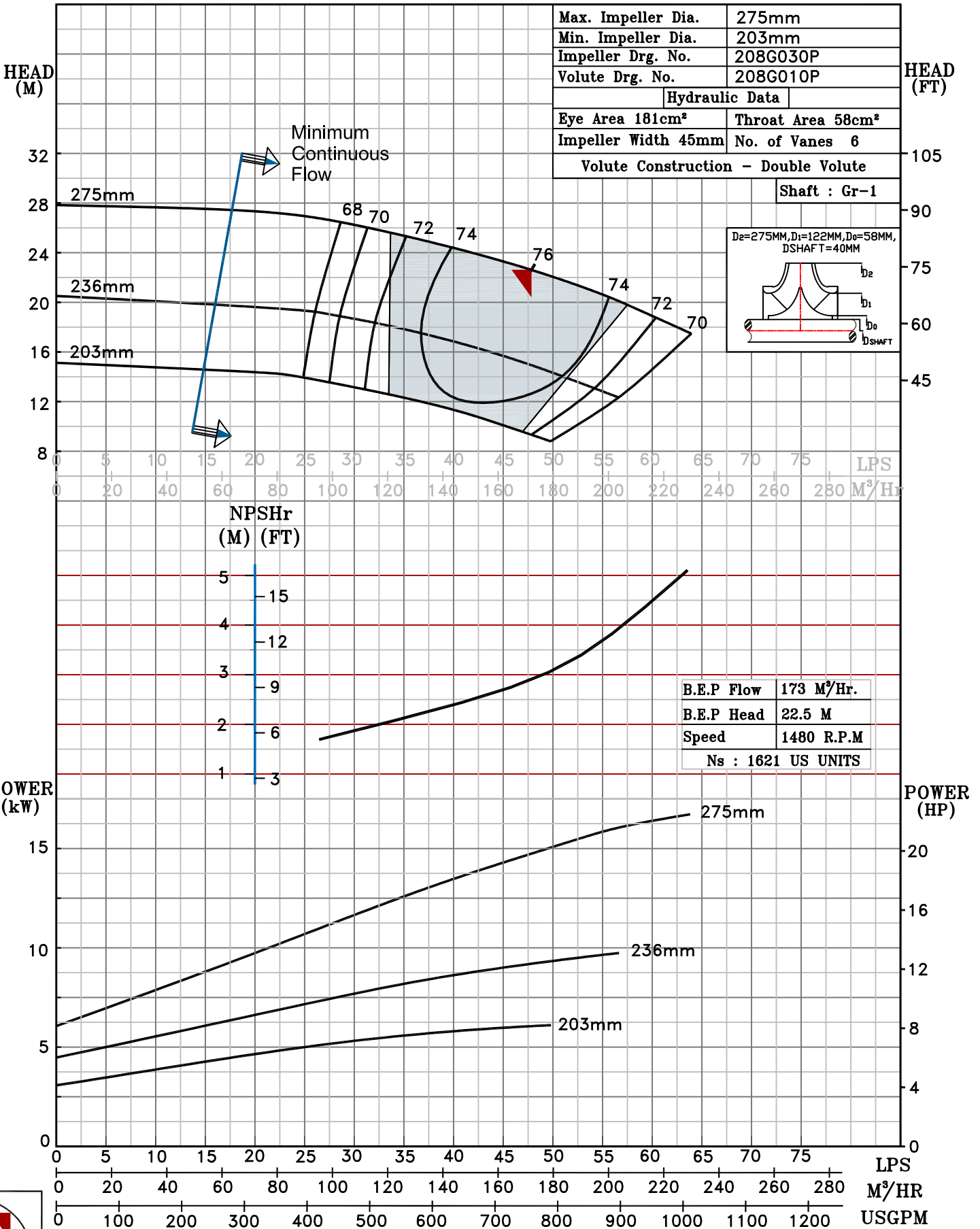


NOTE- PERFORMANCE AS PER ISO 9906 GRADE-2B

PERFORMANCE TEST CURVE OF 100LA @1480 R.P.M		100LA/Y/200854	
 PUMPSENSE <i>CSC RANGE</i>	MODEL 100LA	WORKING PRESS. 12 bar	
	SIZE 125x100-275	TEST PRESS. 18 bar	
	TYPE-AXIALLY SPLIT CASE SINGLE STAGE		SPEED 1480 rpm
SHADED REGION ON THE H-Q CURVE REPRESENTS OPTIMUM SELECTION ZONE			DATE - 10.12.14

PUMP PERFORMANCE CHARACTERISTICS COMPUTED BASED ON CLEAN COLD WATER S.G 1.0

Max. Impeller Dia.	275mm
Min. Impeller Dia.	203mm
Impeller Drg. No.	208G030P
Volute Drg. No.	208G010P
Hydraulic Data	
Eye Area 181cm ²	Throat Area 58cm ²
Impeller Width 45mm	No. of Vanes 6
Volute Construction - Double Volute	
Shaft : Gr-1	



B.E.P Flow	173 M ³ /Hr.
B.E.P Head	22.5 M
Speed	1480 R.P.M
Ns	: 1621 US UNITS



1480 RPM